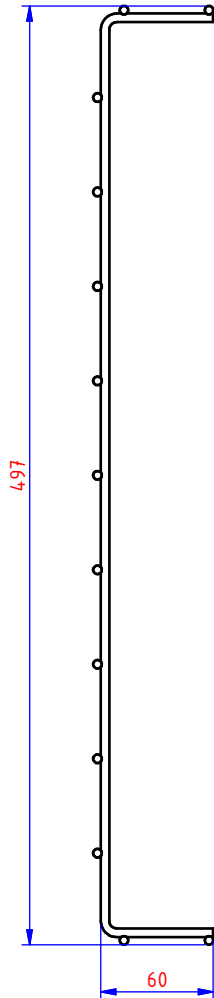
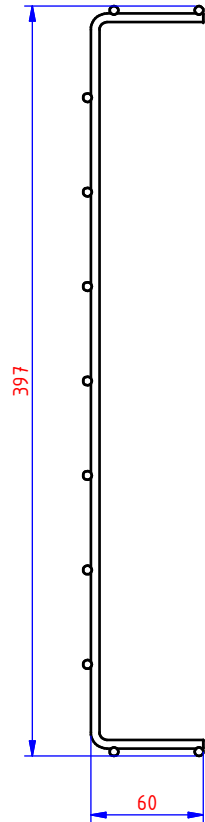


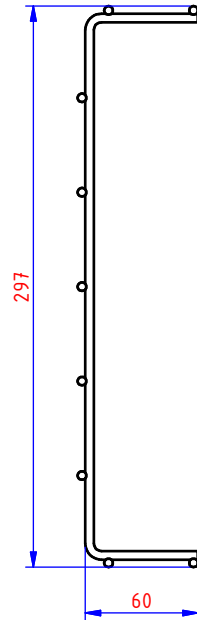
16VF60.500
14VF60.500
(schaal 1 : 4)



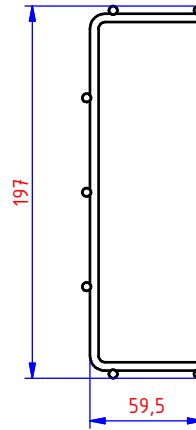
16VF60.400
14VF60.400
(schaal 1 : 4)



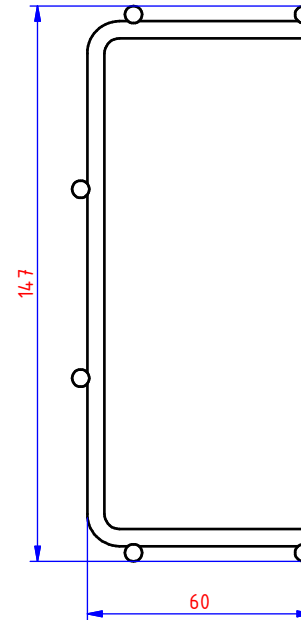
16VF60.300
14VF60.300
(schaal 1 : 4)



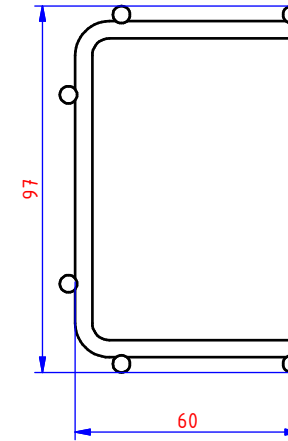
16VF60.200
14VF60.200
(schaal 1 : 4)



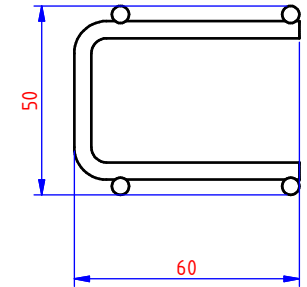
16VF60.150
14VF60.150
(schaal 1 : 2)



16VF60.100
14VF60.100
(schaal 1 : 2)



16VF60.050
14VF60.50
(schaal 1 : 2)



langsdraden \varnothing 4.50 mm
dwarsdraden \varnothing 4.50 mm
lengte goot: 3004 mm
dwarsdraden om de 100 mm

NOT FOR PRODUCTION

Number	Edition	Description of the modification	Date	Visum
5	A	Dubbele langsdraad bovenaan	12/11/01	
	B	Positie langsdraden (geen op 25 mm van de dubbele draad)	12/11/01	
	C	Afronden breedte maat gestrekte net (uniformiteit tekeningen) (ED)	08/08/11	
	D	Dubbele langsdraad verwijderen (aanpassen tekening a realiteit) (ED)	13/07/2012	
	E	Opsplitsing in IN316 en IN304 (zie WF INOX 60 03 okt 2012)	27/03/2013	

Ref.	INOXVF-----	Name	Draadgoot voor zware last [16VF60.050]	
VISUM				
Date	7/01/1998			
Material:	Tolerance:	Standard:	I.S.O. SYMBOL	
-	-			

VERGOKAN		Scale:	Adapt drawing exclusively with CAD	
Meersbloem Melden 16 9700 Oudenaarde		-	INOX	
Tel: 055/31.83.35 Fax: 055/31.43.88		DRAWING NUMBER	FORM	P. 1
		45589	A4	1 P.