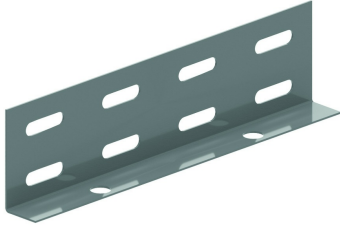


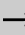
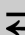



LVBS60

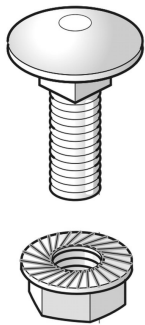
Verbinder für Steigeleiter (BS)

Nur für vertikale Montage
Für Verbindung von KL60



Referenz	 mm	 mm	 mm	 mm	kg/stk		Einheit
LVBS60	51	200			0,120	12	STK

Zu befestigen mit:



Selbstsichernde Schraube /
Flanschmutter
VMK