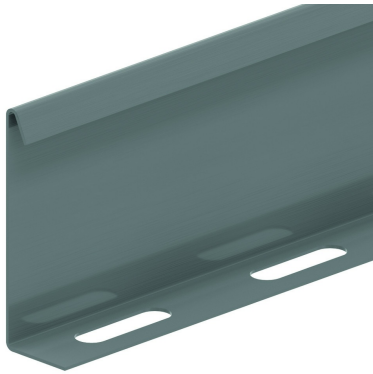



# SLOS

## Trennsteg schraubbar



Referenz	Oberfläche	↕ mm	↔ mm	→  ← mm	↔ mm	kg/m		Einheit
<b>SLOS35</b>	SZ	28			3000	0,330	150	M
<b>ZMSLOS35</b>	DF	28			3000	0,257	150	M

Befestigungsmaterial: 1 Stück pro Meter.  
 HDKS60: HDVM6.10  
 HDKSR60: HDBKID25

### Legenden Oberfläche

- SZ = Sendzimir
- DF = Defender