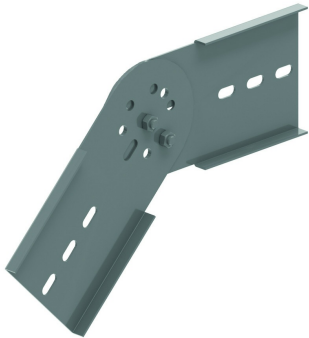



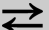



KLWDSV
Gelenkverbinder vertikal für KLW



In die Enden der Längsholme schieben (umklammernd) und festschrauben
Vormontiert mit B12.20

Referenz	 mm	 mm	 mm	 mm	kg/stk		Einheit
KLWDSV	169	20		434	2,260	2	STK

Min. Anzahl Schrauben und Muttern: 4 Stück.

Zu befestigen mit:



Selbstsichernde
Schraube (DIN
603)
RBK

Verzahnte
Flanschnutter
(DIN 6923)
RM