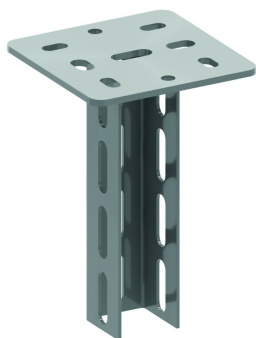


HDHSMU50

Hängestiel mittelschwer



Hängestiel mit U-Profil 50x50 mm
Geschweißte Kopfplatte 135x135 mm
Dicke Kopfplatte: 5 mm
Max. Belastung: 2100daN

Max. Belastung: 2100 daN

Standardausführung

Tauchfeuerverzinkt

| HD | Referenz | ↕ mm | ↔ mm | → ← mm | ↔ mm | kg/stk | 📦 | Lager | Einheit |
|----|----------------------|---------|---------|------------|---------|--------|----|-------|---------|
| - | HDHSMU50.200 | 200 | 50 | | | 0,940 | 20 | X | STK |
| - | HDHSMU50.300 | 300 | 50 | | | 1,160 | 1 | X | STK |
| - | HDHSMU50.400 | 400 | 50 | | | 1,380 | 1 | X | STK |
| - | HDHSMU50.500 | 500 | 50 | | | 1,610 | 1 | X | STK |
| - | HDHSMU50.600 | 600 | 50 | | | 1,830 | 1 | X | STK |
| - | HDHSMU50.800 | 800 | 50 | | | 2,270 | 1 | X | STK |
| - | HDHSMU50.1000 | 1000 | 50 | | | 2,710 | 1 | X | STK |
| - | HDHSMU50.1200 | 1200 | 50 | | | 3,150 | 1 | X | STK |
| - | HDHSMU50.1500 | 1500 | 50 | | | 3,820 | 1 | X | STK |

Schutzkappe aus gelbem PVC: DOPHSMU