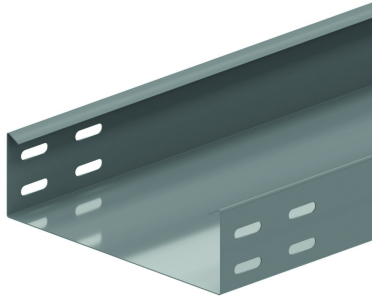


I4KG60

Cable tray not perforated

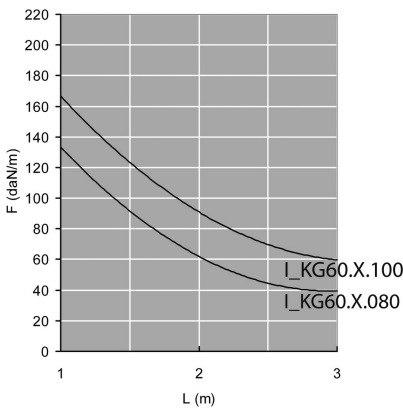


Smooth surface
Return flanges

Standard finish		Stainless Steel 304							
HD Reference		↕ mm	↔ mm	→ ← mm	↔ mm	kg/m	📦	Stock	Unit
-	I4KG60.100.080	60	100	0,8	3000	1,500	30		M
-	I4KG60.200.080	60	200	0,8	3000	2,170	30		M
-	I4KG60.300.080	60	300	0,8	3000	2,770	30		M

LOAD DIAGRAM

Graph valid for I4KG60. This diagram illustrates the permissible uniformly distributed loads applied to multiple supports. They comply with IEC 61537 par 10.3.3 test type III with connection to 1/5 of the span.



F = max. admissible load (daN/m)

L = support distance (m)

Max. deflection (m) = L/100

Manufactured with protective film.

Fix with:



Toothed round head bolt / flange nut
16VM

Joiner
I6V60.200