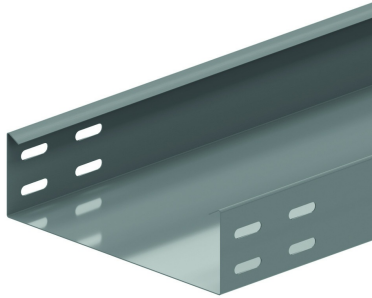


I6KG60

Cable tray not perforated

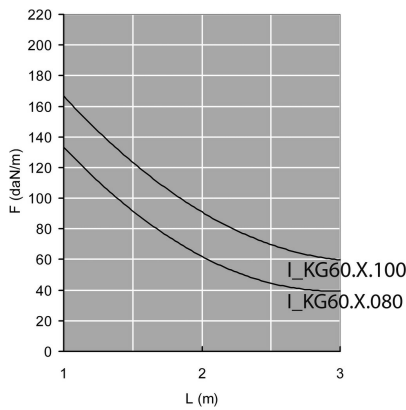


Smooth surface
Return flanges

Standard finish		Stainless Steel 316							
HD Reference	↕ mm	↔ mm	→ ← mm	↔ mm	kg/m	📦	Stock	Unit	
- I6KG60.100.080	60	100	0,8	3000	1,500	30		M	
- I6KG60.200.080	60	200	0,8	3000	2,170	30		M	
- I6KG60.300.080	60	300	0,8	3000	2,770	30		M	
- I6KG60.400.080	60	400	0,80	3000	3,568	3		M	

LOAD DIAGRAM

Graph valid for I6KG60. This diagram illustrates the permissible uniformly distributed loads applied to multiple supports. They comply with IEC 61537 par 10.3.3 test type III with connection to 1/5 of the span.



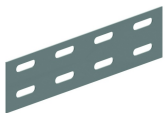
F = max. admissible load (daN/m)

L = support distance (m)

Max. deflection (m) = L/100

Manufactured with protective film.

Fix with:



Joiner
I6V60.200



Toothed round
head bolt / flange
nut
I6VM