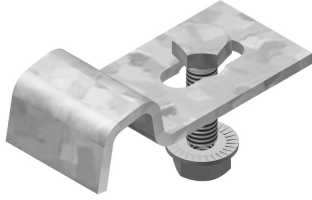


I6KLLBK

Bracket clamp for I6KLL



For fixing the cable ladder on the wall bracket.
Number: 2 per bracket

Standard finish		Stainless Steel 316							
HD	Reference	↕ mm	↔ mm	→ ← mm	↔ mm	kg/stk	📦	Stock	Unit
-	I6KLLBK25	13	25			0,040	20		STK
-	I6KLLBK40	13	40			0,098	20	X	STK

To order per full packaging.
I6KLLBK25 included: Bolt I6B6.20 and nuts I6RM6.
I6KLLBK40 included: Bolt I6B8.20 and sliding nuts PNP08SS.

I6KLLBK25 for cantilevers
I6KLLBK40 for 41 profiles

Pickled and passivated.

