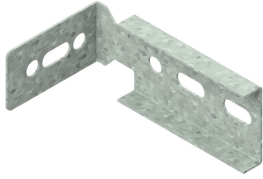


# I6KLM100AH

## Horizontal branch hook for I6KLM100



Slides in the C-opening of the sidewalls .

Standard finish

Stainless Steel 316

HD	Reference	↕ mm	↔ mm	→  ← mm	↔ mm	kg/stk	📦	Stock	Unit
-	<b>I6KLM100AH</b>	71	169		100	0,241	2		STK

### Fix with:



Giant washer  
(DIN 125-1 A)  
I6RO

Nut (DIN 934)  
I6M



Round head  
square neck bolt  
(DIN 603)  
I6RBK

To order per full packaging.  
Minimum number bolts and nuts: 4 pieces.

Pickled and passivated.