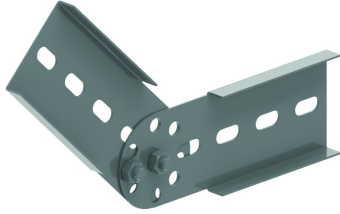


# I6KLM125DSV

## Vertical hinged joiner for I6KLM125

Slides in the C-opening of the sidewalls  
Premounted



Standard finish

Stainless Steel 316

HD Reference	↕ mm	↔ mm	→  ← mm	↔ mm	kg/stk	📦	Stock	Unit
- <b>I6KLM125DSV</b>	96	20		434	0,960	2		STK

To order per full packaging.  
Minimum number bolts and nuts: 4 pieces.

Pickled and passivated.

### Fix with:



Round head  
square neck bolt  
(DIN 603)  
I6RBK

Nut (DIN 934)  
I6M



Giant washer  
(DIN 125-1 A)  
I6RO