

I6KSF

Cable Ladder Food and Pharma

Closed tubular tube girders.
Rounded corner profile.

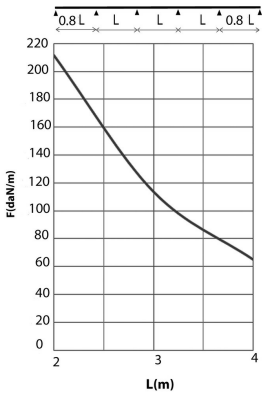
Usable inner height: 28 mm
Rung distance: 250 mm



Standard finish

Stainless Steel 316

HD	Reference	↑ mm	↔ mm	→ ← mm	↔ mm	kg/m	📦	Stock	Unit
-	I6KSF200	60	200		6000	1,968	6		M
-	I6KSF300	60	300		6000	2,951	6		M
-	I6KSF400	60	400		6000	3,935	6		M
-	I6KSF600	60	600		6000	5,903	6		M



LOAD DIAGRAM

This diagram illustrates the permissible uniformly distributed horizontal loads applied to multiple supports. They comply with IEC 61537 par 10.3.3 test type III with connection to 1/5 of the span.

F = max. admissible load (daN/m)

L = support distance (m)

Max. deflection (m) = L/100

CHARACTERISTICS

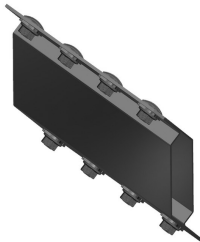
Ladder for food en pharmaceutical applications.
Special rungs to facilitate water evacuation.

TECHNICAL INFO

Side walls are constructed from tubular section 60 mm x 15 mm.
The rungs have a corner profile rounded off with a radius of 6mm at the top. Rungs are fixed at 250 mm intervals.

Pickled and passivated.

Fix with:



Joiner for I6KSF
I6KSFKP

