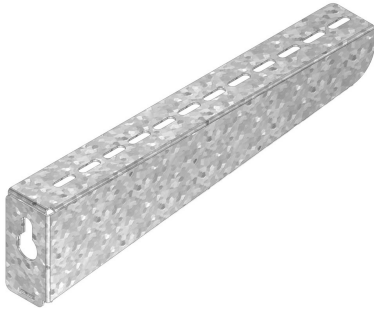


# I6WSU

## Universal support bracket



For direct fixing on the wall

Standard finish	Stainless Steel 316
-----------------	---------------------

Width	Max. load (in daN)
100	120
150	120
200	120
250	120
300	120
400	120
500	120
600	120

HD	Reference	↑ mm	↔ mm	→  ← mm	↔ mm	kg/stk	📦	Stock	Unit
-	<b>I6WSU100</b>	60	128			0,208	24	X	STK
-	<b>I6WSU150</b>	66	178			0,291	24	X	STK
-	<b>I6WSU200</b>	73	228			0,378	24	X	STK
-	<b>I6WSU250</b>	79	278			0,469	12	X	STK
-	<b>I6WSU300</b>	85	328			0,563	12	X	STK
-	<b>I6WSU400</b>	98	428			0,763	12	X	STK
-	<b>I6WSU500</b>	110	528			0,978	6	X	STK
-	<b>I6WSU600</b>	122	628			1,209	6	X	STK

Max. load (in daN): uniformly distributed over complete width of cantilever brackets.

Pickled and passivated.