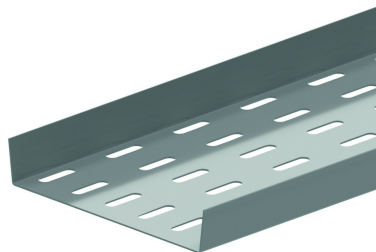


BP
Floor plate



Standard finish		Pre-galvanised							
Optional finish									
Optional finish PE		Coating							
HD	Reference	↕ mm	↔ mm	→ ← mm	↔ mm	kg/m	📦	Stock	Unit
-	BP200	25	141		3000	1,560	3		M
-	BP300	25	241		3000	2,400	3		M
-	BP400	25	341		3000	3,230	3		M
-	BP500	25	441		3000	4,030	3		M
-	BP600	25	541		3000	4,860	3		M