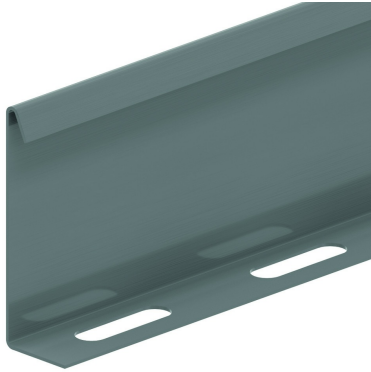


# SLOS

## Bolt-in partition



Standard finish Pre-galvanised

Optional finish

Optional finish PE Coating

HD	Reference	↕ mm	↔ mm	→  ← mm	↔ mm	kg/m	📦	Stock	Unit
-	<b>SLOS35</b>	28			3000	0,330	150	X	M
-	<b>SLOS60</b>	53			3000	0,511	120	X	M
-	<b>ZMSLOS35</b>	28			3000	0,257	150	X	M
-	<b>ZMSLOS60</b>	60			3000	0,397	120	X	M

Fixing set: 1 per meter.  
SLOS60 not to be used with cover HDDI.

### Fix with:



Bracket clamp SLOS for HDKLIE  
HDBKID25