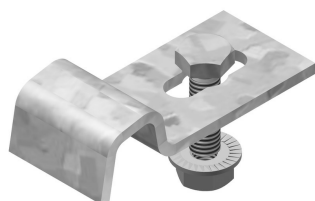


# KLLBK

## Bracket clamp for KLL



For fixing the cable ladder on the wall bracket.

Standard finish	Pre-galvanised
Optional finish	Hot-dip galvanised
Optional finish PE	Coating

HD	Reference	↑ mm	↔ mm	→  ← mm	↔ mm	kg/stk	📦	Stock	Unit
HD	<b>KLLBK25</b>	13	25			0,040	20		STK
HD	<b>KLLBK40</b>	13	40			0,098	20		STK

To order per full packaging.

KLLBK25: Bolt B6.20 and nuts RM6 included

KLLBK40: Bolt B8.20 and nuts PNP08 included

2 pieces per bracket

