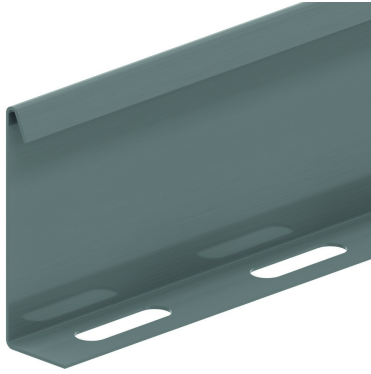


# SLOS

## Bolt-in partition



Standard finish Pre-galvanised

Optional finish

Optional finish PE Coating

| HD | Reference       | ↕<br>mm | ↔<br>mm | →  ←<br>mm | ↔<br>mm | kg/m  | 📦   | Stock | Unit |
|----|-----------------|---------|---------|------------|---------|-------|-----|-------|------|
| -  | <b>SLOS35</b>   | 28      |         |            | 3000    | 0,330 | 150 | X     | M    |
| -  | <b>SLOS60</b>   | 53      |         |            | 3000    | 0,511 | 120 | X     | M    |
| -  | <b>SLOS85</b>   | 78      |         |            | 3000    | 0,680 | 60  | X     | M    |
| -  | <b>ZMSLOS35</b> | 28      |         |            | 3000    | 0,257 | 150 | X     | M    |
| -  | <b>ZMSLOS60</b> | 60      |         |            | 3000    | 0,397 | 120 | X     | M    |
| -  | <b>ZMSLOS85</b> | 78      |         |            | 3000    | 0,529 | 60  |       | M    |

### Fix with:

Fixing set: 1 per metre.



Toothed round head bolt  
RB