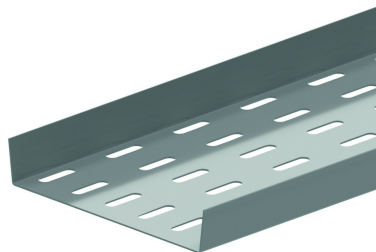


BP

Floor plate



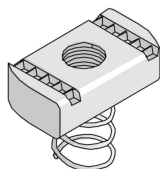
Standard finish	Pre-galvanised
Optional finish	
Optional finish PE	Coating

HD	Reference	↑ mm	↔ mm	→ ← mm	↔ mm	kg/m	📦	Stock	Unit
-	BP200	25	141		3000	1,560	3		M
-	BP300	25	241		3000	2,400	3		M
-	BP400	25	341		3000	3,230	3		M
-	BP500	25	441		3000	4,030	3		M
-	BP600	25	541		3000	4,860	3		M
-	ZMBP200	25	141		3000	1,366	3		M
-	ZMBP300	25	241		3000	2,048	3		M
-	ZMBP500	25	441		3000	3,411	3		M
-	ZMBP400	25	341		3000	2,730	3		M
-	ZMBP600	25	451		3000	4,093	3		M

Fix with:



Toothed round head bolt
RB



Sliding nut for supporting profile
PNS