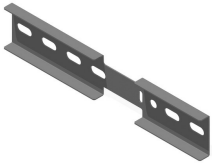


# KLM100DSH

## Horizontal hinged joiner for KLM100



Slides in the C-opening of the sidewalls  
Premounted

Standard finish	Pre-galvanised
Optional finish	
Optional finish PE	Coating

HD	Reference	↕ mm	↔ mm	→  ← mm	↔ mm	kg/stk	📦	Stock	Unit
-	<b>KLM100DSH</b>	71	25		330	0,544	2		STK
-	<b>ZMKLM100DSH</b>	71	25		330	0,544	2		STK

**Fix with:**



To order per full packaging.  
Minimum number bolts and nuts: 4 pieces.

Round head  
square neck bolt  
(DIN 603)  
RBK

Flange nut (DIN  
6923)  
RM