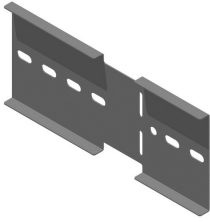


KLWDSH

Horizontal hinged joiner for KLW



Premounted with B10.20

Standard finish

Pre-galvanised

Optional finish

Optional finish PE

Coating

HD	Reference	↕ mm	↔ mm	→ ← mm	↔ mm	kg/stk	📦	Stock	Unit
-	KLWDSH	169	25		330	1,165	2		STK
-	ZMKLWDSH	169	25		330	1,165	2		STK

Fix with:



Round head square neck bolt (DIN 603) RBK

Flange nut (DIN 6923) RM

To order per full packaging.
Minimum number bolts and nuts: 4 pieces.