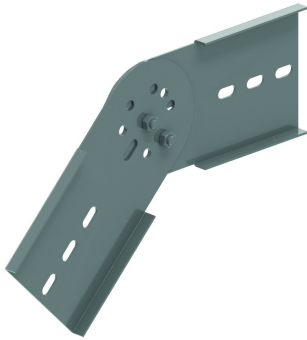


KLWDSV

Vertical hinged joiner for KLW



Premounted with B12.20.

Standard finish	Pre-galvanised
Optional finish	Hot-dip galvanised
Optional finish PE	Coating

HD	Reference	↕ mm	↔ mm	→ ← mm	↔ mm	kg/stk	📦	Stock	Unit
HD	KLWDSV	169	20		434	2,260	2		STK

To order per full packaging.
Minimum number bolts and nuts: 4 pieces.

Fix with:



Round head
square neck bolt
(DIN 603)
RBK

Flange nut (DIN
6923)
RM