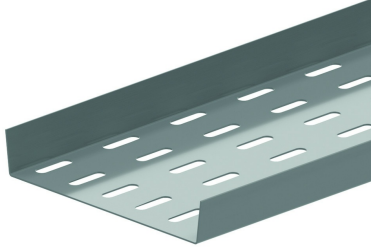


BP Floor plate

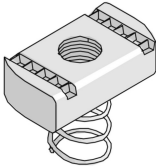


Reference	Finish	↑ mm	↔ mm	→ ← mm	↔ mm	kg/m	📦	Unit
BP200	SZ	25	141		3000	1,560	3	M
BP300	SZ	25	241		3000	2,400	3	M
BP400	SZ	25	341		3000	3,230	3	M
BP500	SZ	25	441		3000	4,030	3	M
BP600	SZ	25	541		3000	4,860	3	M
ZMBP200	DF	25	141		3000	1,366	3	M
ZMBP300	DF	25	241		3000	2,048	3	M
ZMBP500	DF	25	441		3000	3,411	3	M
ZMBP400	DF	25	341		3000	2,730	3	M
ZMBP600	DF	25	451		3000	4,093	3	M

Fix with:



Toothed round
head bolt
RB



Sliding nut for
supporting profile
PNS

Legend finish

- SZ = Sendzimir
- DF = Defender