

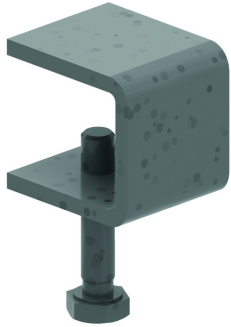
# DKLMZWVB45

## Cover for lowering elbow ladder bend 45°



Radius: 600 mm

Fix with:



Cover clamp  
ZMDKIG

| Reference                 | Finish | ↑<br>mm | ↔<br>mm | →  ←<br>mm | ↔<br>mm | kg/stk | Unit | Unit |
|---------------------------|--------|---------|---------|------------|---------|--------|------|------|
| <b>DKLM100VB45.150</b>    | SZ     | 15      | 156     | 0,9        |         | 0,813  | 1    | STK  |
| <b>DKLM100VB45.200</b>    | SZ     | 15      | 206     | 0,9        |         | 1,088  | 1    | STK  |
| <b>DKLM100VB45.300</b>    | SZ     | 15      | 306     | 0,9        |         | 1,637  | 1    | STK  |
| <b>DKLM100VB45.400</b>    | SZ     | 15      | 406     | 0,9        |         | 2,186  | 1    | STK  |
| <b>DKLM100VB45.450</b>    | SZ     | 15      | 456     | 0,9        |         | 2,461  | 1    | STK  |
| <b>DKLM100VB45.500</b>    | SZ     | 15      | 506     | 0,9        |         | 2,735  | 1    | STK  |
| <b>DKLM100VB45.600</b>    | SZ     | 15      | 606     | 0,9        |         | 3,284  | 1    | STK  |
| <b>DKLM100VB45.750</b>    | SZ     | 15      | 756     | 1,25       |         | 5,785  | 1    | STK  |
| <b>DKLM100VB45.800</b>    | SZ     | 15      | 806     | 1,25       |         | 6,086  | 1    | STK  |
| <b>DKLM100VB45.900</b>    | SZ     | 15      | 906     | 1,25       |         | 6,848  | 1    | STK  |
| <b>DKLM100VB45.1000</b>   | SZ     | 15      | 1006    | 1,25       |         | 7,611  | 1    | STK  |
| <b>ZMDKLM100VB45.150</b>  | DF     | 15      | 156     | 0,9        |         | 0,813  | 1    | STK  |
| <b>ZMDKLM100VB45.200</b>  | DF     | 15      | 206     | 0,9        |         | 1,088  | 1    | STK  |
| <b>ZMDKLM100VB45.300</b>  | DF     | 15      | 306     | 0,9        |         | 1,637  | 1    | STK  |
| <b>ZMDKLM100VB45.400</b>  | DF     | 15      | 406     | 0,9        |         | 2,186  | 1    | STK  |
| <b>ZMDKLM100VB45.450</b>  | DF     | 15      | 456     | 0,9        |         | 2,461  | 1    | STK  |
| <b>ZMDKLM100VB45.500</b>  | DF     | 15      | 506     | 0,9        |         | 2,735  | 1    | STK  |
| <b>ZMDKLM100VB45.600</b>  | DF     | 15      | 606     | 0,9        |         | 3,284  | 1    | STK  |
| <b>ZMDKLM100VB45.750</b>  | DF     | 15      | 756     | 1,25       |         | 5,785  | 1    | STK  |
| <b>ZMDKLM100VB45.800</b>  | DF     | 15      | 806     | 1,25       |         | 6,086  | 1    | STK  |
| <b>ZMDKLM100VB45.900</b>  | DF     | 15      | 906     | 1,25       |         | 6,848  | 1    | STK  |
| <b>ZMDKLM100VB45.1000</b> | DF     | 15      | 1006    | 1,25       |         | 7,611  | 1    | STK  |

Cover for ladder accessories as standard Cover can be used for Ladders KLM100-KLM125-KLW-KLZ

**Legend finish**

- SZ = Sendzimir
- DF = Defender