

SLOS

Partition

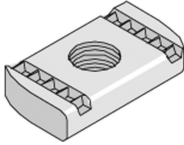


| Reference | Finish | ↕ mm | ↔ mm | → ← mm | ↔ mm | kg/m | 📦 | Unit |
|--------------------|--------|---------|---------|------------|---------|-------|-----|------|
| SLOS35 | SZ | 28 | | | 3000 | 0,330 | 150 | M |
| SLOS60 | SZ | 53 | | | 3000 | 0,511 | 120 | M |
| SLOS60.2000 | - | 53 | | | 1900 | 0,793 | 520 | M |
| SLOS85 | SZ | 78 | | | 3000 | 0,680 | 60 | M |
| SLOS110 | SZ | 103 | | | 3000 | 0,820 | 30 | M |
| ZMSLOS35 | DF | 28 | | | 3000 | 0,257 | 150 | M |
| ZMSLOS60 | DF | 60 | | | 3000 | 0,397 | 120 | M |
| ZMSLOS85 | DF | 78 | | | 3000 | 0,529 | 60 | M |
| ZMSLOS110 | DF | 103 | | | 3000 | 0,638 | 30 | M |

Fix with:



Toothed round head bolt
RB



Sliding nut for supporting profile
PNP06-
PNP12A

Fixing set: 1 per metre.

Legend finish

- SZ = Sendzimir
- DF = Defender