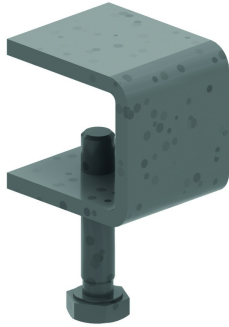


DKLMZWVB45

Cover for lowering elbow ladder bend 45°



Fix with:



Cover clamp
ZMDKIG

Radius: 600 mm

Reference	Finish	↑ mm	↔ mm	→ ← mm	↔ mm	kg/stk	📦	Unit
DKLZVB45.150	SZ	15	156	0,9		0,857	1	STK
DKLZVB45.200	SZ	15	206	0,9		1,146	1	STK
DKLZVB45.300	SZ	15	306	0,9		1,723	1	STK
DKLZVB45.400	SZ	15	406	0,9		2,300	1	STK
DKLZVB45.450	SZ	15	456	0,9		2,589	1	STK
DKLZVB45.500	SZ	15	506	0,9		2,878	1	STK
DKLZVB45.600	SZ	15	606	0,9		3,455	1	STK
DKLZVB45.750	SZ	15	756	1,25		6,000	1	STK
DKLZVB45.800	SZ	15	806	1,25		6,400	1	STK
DKLZVB45.900	SZ	15	906	1,25		7,202	1	STK
DKLZVB45.1000	SZ	15	1006	1,25		8,083	1	STK
ZMDKLZVB45.150	DF	15	156	0,9		0,857	1	STK
ZMDKLZVB45.200	DF	15	206	0,9		1,146	1	STK
ZMDKLZVB45.300	DF	15	306	0,9		1,723	1	STK
ZMDKLZVB45.400	DF	15	406	0,9		2,300	1	STK
ZMDKLZVB45.450	DF	15	456	0,9		2,589	1	STK
ZMDKLZVB45.500	DF	15	506	0,9		2,878	1	STK
ZMDKLZVB45.600	DF	15	606	0,9		3,455	1	STK
ZMDKLZVB45.750	DF	15	756	1,25		6,000	1	STK
ZMDKLZVB45.800	DF	15	806	1,25		6,400	1	STK
ZMDKLZVB45.900	DF	15	906	1,25		7,202	1	STK
ZMDKLZVB45.1000	DF	15	1006	1,25		8,083	1	STK

Cover for ladder accessories as standard Cover can be used for Ladders KLM100-KLM125-KLW-KLZ

Legend finish

- SZ = Sendzimir
- DF = Defender