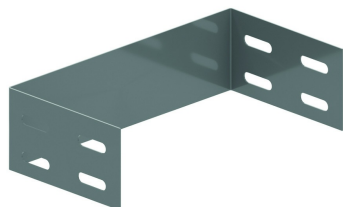


E

End piece



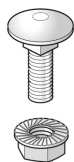
To order: Height 35 mm - 85 mm - 110 mm

Reference	Finish	↑ mm	↔ mm	→ ← mm	↔ mm	kg/stk	📦	Unit
ZME110.100	DF	110	100	0,75	100	0,155	1	STK
ZME110.150	DF	110	150	0,75	100	0,184	1	STK
ZME110.200	DF	110	200	0,75	100	0,213	1	STK
ZME110.300	DF	110	300	0,75	100	0,270	1	STK
ZME110.400	DF	110	400	0,75	100	0,328	1	STK
ZME110.500	DF	110	500	0,75	100	0,386	1	STK
ZME110.600	DF	110	600	0,75	100	0,443	1	STK
ZME85.150	DF	85	150	0,75	100	0,140	1	STK
ZME85.100	DF	85	100	0,75	100	0,118	1	STK
ZME85.200	DF	85	200	0,75	100	0,162	1	STK
ZME85.300	DF	85	300	0,75	100	0,206	1	STK
ZME85.400	DF	85	400	0,75	100	0,250	1	STK
ZME85.500	DF	85	500	0,75	100	0,294	1	STK
ZME85.600	DF	85	600	0,75	100	0,338	1	STK
ZME60.050	DF	55	46			0,099	1	STK
ZME60.075	DF	55	46			0,110	1	STK
ZME60.100	DF	55	96			0,121	1	STK
ZME60.150	DF	55	146			0,143	1	STK
ZME60.200	DF	55	196			0,154	1	STK
ZME60.300	DF	55	296			0,198	1	STK
ZME60.400	DF	55	396			0,242	1	STK
ZME60.500	DF	55	496			0,286	1	STK
ZME60.600	DF	55	596			0,330	1	STK

Fix with:



Toothed round head bolt / flange nut
VM



Round head square neck bolt / flange nut
VMK

Minimum number bolts and nuts: 4 pieces.

Legend finish

- DF = Defender