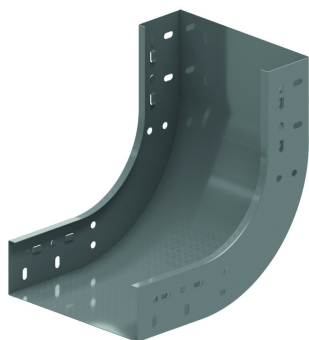


SBCL

Snap-in rising elbow 90°



Snap-in system with cable tray KBSC60, KBS60 and KBSI60

Radius: 100 mm

Reference	Finish	↕ mm	↔ mm	→ ← mm	↔ mm	kg/stk	📦	Unit
ZMSBCL90.60.050	DF	60	50			0,494	1	STK
ZMSBCL90.60.075	DF	60	75			0,557	1	STK
ZMSBCL90.60.100	DF	60	100			0,620	1	STK
ZMSBCL90.60.150	DF	60	150			0,745	1	STK
ZMSBCL90.60.200	DF	60	200			0,871	1	STK
ZMSBCL90.60.300	DF	60	300			1,122	1	STK
ZMSBCL90.60.400	DF	60	400			1,373	1	STK
ZMSBCL90.60.500	DF	60	500			1,624	1	STK
ZMSBCL90.60.600	DF	60	600			1,875	1	STK

Opening for extra locking using 4x VM6.10.
 Openings provided for fitting a cover.
 Only available in height 60 mm.

Legend finish

- DF = Defender