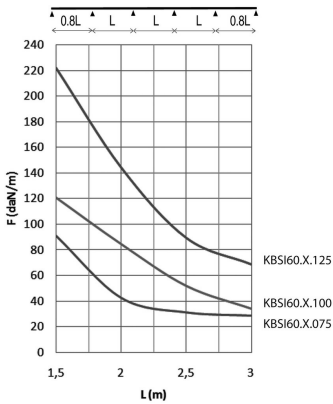
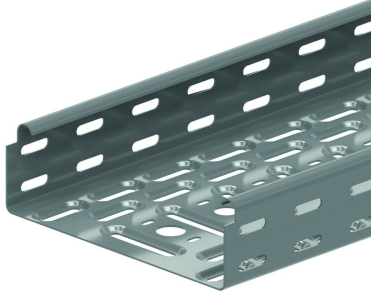


KBSI60

Cable tray with interlocking ends

Interlocking ends
Alternative perforations
Return flanges



Reference	↑ mm	↔ mm	→ ← mm	↔ mm	kg/m	📦	Unit
KBSI60.075.125	60	75	1,25	3000	1,815	60	M
KBSI60.100.125	60	100	1,25	3000	2,089	60	M
KBSI60.150.125	60	150	1,25	3000	2,525	30	M
KBSI60.200.125	60	200	1,25	3000	2,974	30	M
KBSI60.300.125	60	300	1,25	3000	3,867	30	M
KBSI60.400.125	60	400	1,25	3000	4,804	30	M
KBSI60.500.125	60	500	1,25	3000	5,726	30	M
KBSI60.600.125	60	600	1,25	3000	6,655	30	M

LOAD DIAGRAM

This diagram illustrates the permissible uniformly distributed loads applied to multiple supports. They comply with IEC 61537 with connection in the centre of the span and the end span = 0,8 x the span.

F = max. admissible load (daN/m)

L = support distance (m)

Max. deflection (m) = L/100

Other lengths on request: max. 6 m per steps of 100 mm. Can be attached in three ways: -KBVCL -VM6.10 -VMK6.10 (=RBK6.10 & RM6)