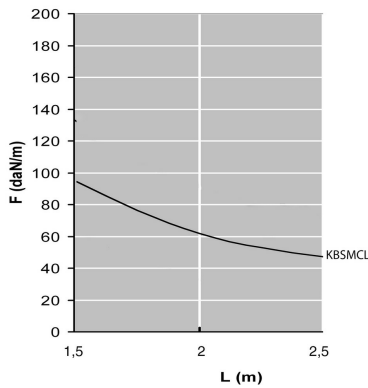
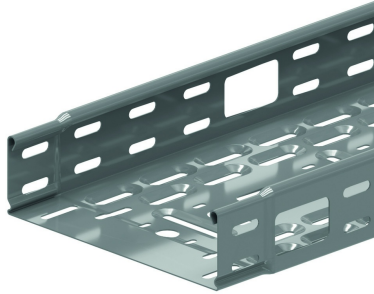


# KBSMCL60

## Cable tray machine constr. interl. ends clickable

Alternative perforation  
Return flanges



Reference	↑ mm	↔ mm	→  ← mm	↔ mm	kg/m	Unit	Unit
<b>KBSMCL60.100.100</b>	60	100	1	3000	1,560	3	M
<b>KBSMCL60.150.100</b>	60	150	1	3000	1,890	3	M
<b>KBSMCL60.200.100</b>	60	200	1	3000	2,220	3	M
<b>KBSMCL60.300.100</b>	60	300	1	3000	2,870	3	M

### LOAD DIAGRAM

This diagram illustrates the permissible uniformly distributed loads applied to multiple supports. They comply with IEC 61537 par 10.3.3 test type III with connection to 1/5 of the span.

F = max. admissible load (daN/m)

L = support distance (m)

Max. deflection (m) = L/100

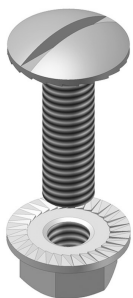
### CHARACTERISTICS

- Clickable
- The cable outlet holes allow the cable trays to be used in machine constructions, especially in the field of internal transport.
- Can be used as lighting rail by immediately connecting through bottom perforations M16 and M20.
- Staggered slots in sides and bottom for easy connection with accessories.
- To be used with standard accessories, such as the cover with swivel clamp.
- Only DCO to be used with cover.

### TECHNICAL INFORMATION

- Large cable outlet with round corners (dimensions 30x50 mm)
- Distance between cable outlets: bottom = 150 mm, sides = 300 mm
- Edge protection RBKBSM to order separately
- Round cable gland central to the bottom, alternately M16/M20

### Fix with:



Toothed round head bolt / flange nut  
VM

