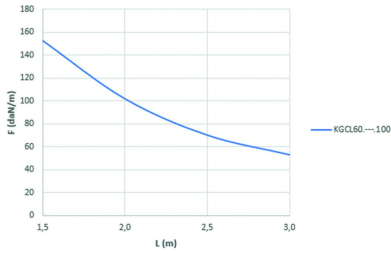
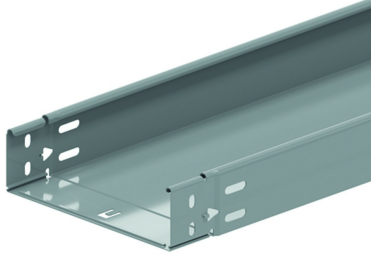


KGCL60

Cable tray not perforated, clickable

Clickable ends
 Closed bottom
 Prefabricated click fold



	1,5	2,0	2,5	3,0
KGCL60....100	152,5	101,7	69,9	52,8

Reference	Finish	↑ mm	↔ mm	→ ← mm	↔ mm	kg/m	📦	Unit
KGCL60.075.100	SZ	60	75	1	3000	1,700	60	M
KGCL60.100.100	SZ	60	100	1	3000	1,900	60	M
KGCL60.150.100	SZ	60	150	1	3000	2,300	30	M
KGCL60.200.100	SZ	60	200	1	3000	2,700	30	M
KGCL60.300.100	SZ	60	300	1	3000	3,500	30	M
KGCL60.400.100	SZ	60	400	1	3000	4,300	30	M
ZMKGCL60.075.100	DF	60	75	1	3000	1,700	30	M
ZMKGCL60.100.100	DF	60	100	1	3000	1,900	30	M
ZMKGCL60.150.100	DF	60	150	1	3000	2,300	30	M
ZMKGCL60.200.100	DF	60	200	1	3000	2,700	30	M
ZMKGCL60.300.100	DF	60	300	1	3000	3,500	30	M
ZMKGCL60.400.100	DF	60	400	1	3000	4,300	30	M

LOAD DIAGRAM

This diagram illustrates the permissible uniformly distributed loads applied to multiple supports. They comply with IEC 61537 with connection in the centre of the span and the end span = 0,8 x the span.

F = max. admissible load (daN/m)
 L = support distance (m)
 Max. deflection (m) = L/100

Legend finish

- SZ = Sendzimir
- DF = Defender