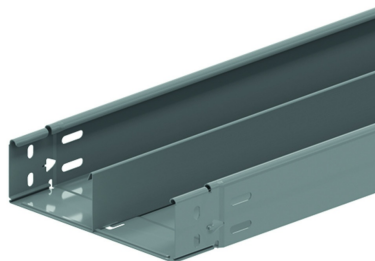


KGCL60S

KGCL with SIN

Clickable ends
 Closed bottom
 Prefabricated click fold



	1,5	2,0	2,5	3,0
KGCL60.---.100	152,5	101,7	69,9	52,8

Reference	Finish	↑ mm	↔ mm	→ ← mm	↔ mm	kg/m	Unit	Unit
KGCL60.075.100S13	SZ	60	75	1	3000	2,211	30	M
KGCL60.100.100S12	SZ	60	100	1	3000	2,411	30	M
KGCL60.100.100S13	SZ	60	100	1	3000	2,411	30	M
KGCL60.150.100S12	SZ	60	150	1	3000	2,811	30	M
KGCL60.150.100S13	SZ	60	150	1	3000	2,811	30	M
KGCL60.150.100S23	SZ	60	150	1	3000	3,322	30	M
KGCL60.200.100S12	SZ	60	200	1	3000	3,211	30	M
KGCL60.200.100S13	SZ	60	200	1	3000	3,211	30	M
KGCL60.200.100S23	SZ	60	200	1	3000	3,722	30	M
KGCL60.300.100S12	SZ	60	300	1	3000	4,011	30	M
KGCL60.300.100S13	SZ	60	300	1	3000	4,011	30	M
KGCL60.300.100S23	SZ	60	300	1	3000	4,522	30	M
KGCL60.400.100S12	SZ	60	400	1	3000	4,811	30	M
KGCL60.400.100S13	SZ	60	400	1	3000	4,811	30	M
KGCL60.400.100S23	SZ	60	400	1	3000	5,322	30	M
ZMKGCL60.075.10S12	DF	60	75	1	3000	2,211	30	M
ZMKGCL60.075.10S13	DF	60	75	1	3000	2,211	30	M
ZMKGCL60.100.10S12	DF	60	100	1	3000	2,411	30	M
ZMKGCL60.100.10S13	DF	60	100	1	3000	2,411	30	M
ZMKGCL60.150.10S12	DF	60	150	1	3000	2,811	30	M
ZMKGCL60.150.10S13	DF	60	150	1	3000	2,811	30	M
ZMKGCL60.150.10S23	DF	60	150	1	3000	3,322	30	M
ZMKGCL60.200.10S12	DF	60	200	1	3000	3,211	30	M
ZMKGCL60.200.10S13	DF	60	200	1	3000	3,211	30	M
ZMKGCL60.200.10S23	DF	60	200	1	3000	3,722	30	M
ZMKGCL60.300.10S12	DF	60	300	1	3000	4,011	30	M
ZMKGCL60.300.10S13	DF	60	300	1	3000	4,011	30	M
ZMKGCL60.300.10S23	DF	60	300	1	3000	4,522	30	M
ZMKGCL60.400.10S12	DF	60	400	1	3000	4,811	30	M
ZMKGCL60.400.10S13	DF	60	400	1	3000	4,811	30	M
ZMKGCL60.400.10S23	DF	60	400	1	3000	5,322	30	M

LOAD DIAGRAM

This diagram illustrates the permissible uniformly distributed loads applied to multiple supports. They comply with IEC 61537 with connection in the centre of the span and the end span = 0,8 x the span.

F = max. admissible load (daN/m)

L = support distance (m)

Max. deflection (m) = L/100

S12: one partition in the middle of the cable tray

S13: one partition at right or the left of the cable tray

S23: two partitions

Legend finish



- SZ = Sendzimir
- DF = Defender