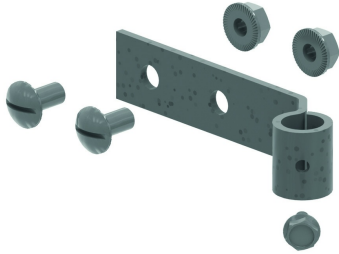


HDBSKLEM

Clamp for fixing of threaded rod

Very fast securing of the threaded rod TIM, using a clamping bold.
Applicable on HDWK and KCLBS.



Standard finish		Hot-dip galvanised							
HD	Reference	↕ mm	↔ mm	→ ← mm	↔ mm	kg/stk	📦	Stock	Unit
-	HDBSKLEM	25	125			0,120	20	X	STK

To order per full packaging.
Ends held up through threaded rod TIM.
No additional bolts and nuts needed.
Threaded rod can be mounted in 1 continuous length.
Diameter of the threaded rod TIM not of influence.
Clamping bolt to be tightened with angular momentum of 10 Nm.