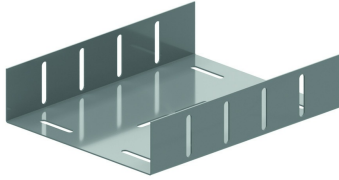


# KPBS

## Joiner for Cable tray

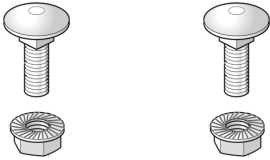


For joining of KBS60.

		Standard finish				Pre-galvanised			
		Optional finish				Hot-dip galvanised			
HD	Reference	↑ mm	↔ mm	→  ← mm	↔ mm	kg/stk	📦	Stock	Unit
HD	<b>KPBS100</b>	55	96			0,550	1	X	STK
HD	<b>KPBS150</b>	55	146			0,670	1	X	STK
HD	<b>KPBS200</b>	55	196			0,850	1	X	STK
HD	<b>KPBS300</b>	55	296			1,100	1	X	STK

Use all perforations.

### Fix with:



Round head square neck bolt / flange nut  
VMK

Round head square neck bolt / flange nut  
VMK