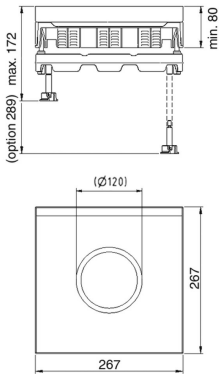
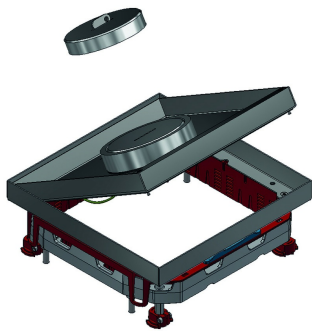


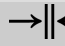




KDVITWD3
Hinged cover square, water resistant



Build-in frame + tileframe + water resistant cable outlet + alu frame + tube cover key

Max. load: 2000 N (small surface area)
Max. load: 3000 N (large surface area)
Active condition: IP 23
Non-active condition: IP 53
Depth of floor covering: Max. 26 mm

Standard finish		Stainless Steel 304							
HD	Reference	 mm	 mm	 mm	 mm	kg/stk		Stock	Unit
-	KDVITWD3		267		267	3,800	1	X	STK

Tested to EN 50085-2-2.

Hinged cover for 3 compartments.

Can be leveled by adjusting 4 bolts on included alu-frame NEOT3.
Cover can be mounted into cover frame in 1 direction.
Hinged cover is provided with a watertight cable exit and an aluminium screwcover. This can be extended with a cable exit tube (KUWDT) which guarantees watertightness when in use.
Hinged cover is provided with an earthing strip between cover and frame.

Ideal for wet areas.