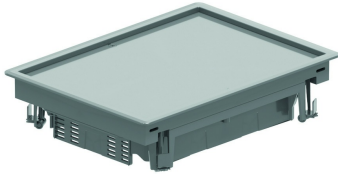


# BDVKK2

## Blind cover rectangular, universal

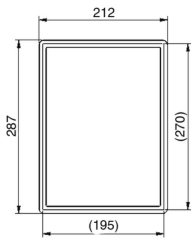
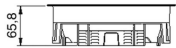


Color: Grey RAL 7011/ Black RAL 9011  
 Max. load: 1500 N (small surface area)  
 Max. load: 2000 N (large surface area)  
 Non-active condition: IP 30  
 Depth of floor covering: Min. 5 mm - Max. 12 mm  
 Thickness steel plate : 3 mm

Standard finish

Polypropylene

HD Reference	↑ mm	↔ mm	→  ← mm	↔ mm	kg/stk	📦	Stock	Unit
- <b>BDVKK2.5-7011</b>		192		267	1,750	6	X	STK
- <b>BDVKK2.5-9011</b>		192		267	1,750	6	X	STK



Tested to EN 50085-2-2.

Standard depth of floor covering is 5 mm and can be reduced by fitting packers OHEVB2.2 and/or OHEVB2.5.

- Can be fixed through included universal clamps in raised floor panels.
- Cut-outs in the floor panels 270x195 mm (with a tolerance of -1 mm to +2 mm).
  - Clamp range between 25 and 45 mm

For use in dry floors only.