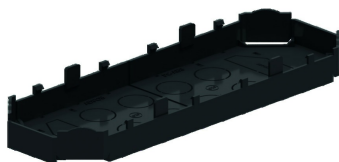


ADPOB

Baseplate for TSBO



To seal the open side of the TSBOB in high-voltage applications.

Color: Black RAL 9011

| Reference | ↕ mm | ↔ mm | → ← mm | ↔ mm | kg/stk | 📦 | Unit |
|--------------|---------|---------|------------|---------|--------|----|------|
| ADPOB | | | | | 0,039 | 12 | STK |

Tested to EN 50085-2-2.

To be assembled on TSBOB.

Equipped with breakouts in the corners for cable outlets and strain relief and with 8 breakouts diameter 20mm.

Compatible with old version TSBU---