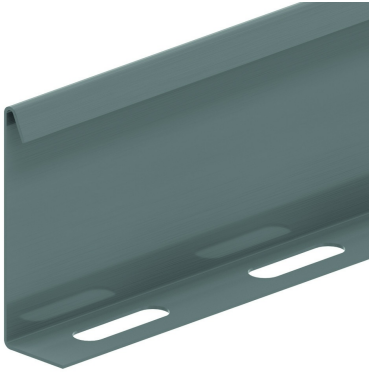


# SLOS

## Bolt-in partition



Reference	Finish	↑ mm	↔ mm	→  ← mm	↔ mm	kg/m	📦	Unit
<b>SLOS35</b>	SZ	28			3000	0,330	150	M
<b>SLOS60</b>	SZ	53			3000	0,511	120	M
<b>SLOS85</b>	SZ	78			3000	0,680	60	M

**Legend finish**  
- SZ = Sendzimir