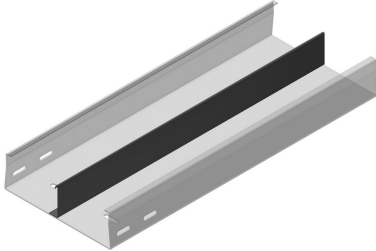
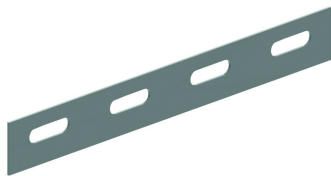


# TFCL60S

## TFCL with SIN



Fix with:



Joining plate  
V35.200

Reference	↑ mm	↔ mm	→  ← mm	↔ mm	kg/m	📦	Unit
<b>TFCL60.100.200S12</b>	60	100	2	3000	4,161	30	M
<b>TFCL60.100.200S13</b>	60	100	2	3000	4,161	30	M
<b>TFCL60.150.200S12</b>	60	150	2	3000	4,951	30	M
<b>TFCL60.150.200S13</b>	60	150	2	3000	4,951	30	M
<b>TFCL60.150.200S23</b>	60	150	2	3000	5,462	30	M
<b>TFCL60.200.200S12</b>	60	200	2	3000	5,761	30	M
<b>TFCL60.200.200S13</b>	60	200	2	3000	5,761	30	M
<b>TFCL60.200.200S23</b>	60	200	2	3000	6,272	30	M
<b>TFCL60.250.200S12</b>	60	250	2	3000	6,531	30	M
<b>TFCL60.250.200S13</b>	60	250	2	3000	6,531	30	M
<b>TFCL60.250.200S23</b>	60	250	2	3000	7,042	30	M
<b>TFCL60.300.200S12</b>	60	300	2	3000	7,361	30	M
<b>TFCL60.300.200S13</b>	60	300	2	3000	7,361	30	M
<b>TFCL60.300.200S23</b>	60	300	2	3000	7,872	30	M

S12: one partition in the middle of the cable tray  
 S13: one partition at right or the left of the cable tray  
 S23: two partitions