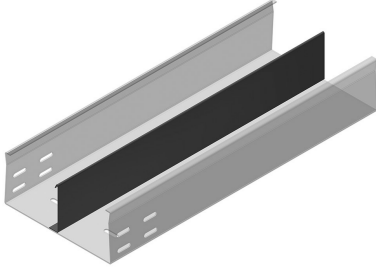
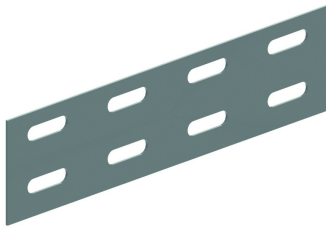


**TFCL85S**  
TFCL with SIN



**Fix with:**



Joining plate  
V60.200

Reference	↑ mm	↔ mm	→  ← mm	↔ mm	kg/m	📦	Unit
<b>TFCL85.100.200S12</b>	85	100	2	3000	5,110	30	M
<b>TFCL85.100.200S13</b>	85	100	2	3000	5,110	30	M
<b>TFCL85.150.200S12</b>	85	150	2	3000	5,910	30	M
<b>TFCL85.150.200S13</b>	85	150	2	3000	5,910	30	M
<b>TFCL85.150.200S23</b>	85	150	2	3000	6,590	30	M
<b>TFCL85.200.200S12</b>	85	200	2	3000	6,710	30	M
<b>TFCL85.200.200S13</b>	85	200	2	3000	6,710	30	M
<b>TFCL85.200.200S23</b>	85	200	2	3000	7,390	30	M
<b>TFCL85.250.200S12</b>	85	250	2	3000	7,510	30	M
<b>TFCL85.250.200S13</b>	85	250	2	3000	7,510	30	M
<b>TFCL85.250.200S23</b>	85	250	2	3000	8,190	30	M
<b>TFCL85.300.200S12</b>	85	300	2	3000	8,310	30	M
<b>TFCL85.300.200S13</b>	85	300	2	3000	8,310	30	M
<b>TFCL85.300.200S23</b>	85	300	2	3000	8,990	30	M

S12: one partition in the middle of the cable tray  
 S13: one partition at right or the left of the cable tray  
 S23: two partitions