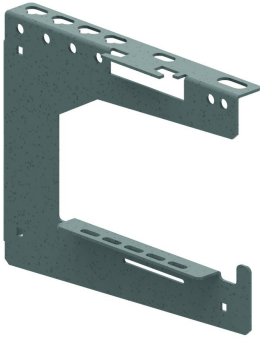


CCLI

Bracket for wall, ceiling and cable



Ideal for installations with wire suspensions.
Also applicable for KBSCL, KBSI, KBS, KGCL, KGI, KG.

| | |
|--------------------|----------------|
| Standard finish | Pre-galvanised |
| Optional finish PE | Coating |

| | Max. load (in daN) (wall) | Max. load (in daN) (ceiling) |
|---------|---------------------------|------------------------------|
| CCLI100 | 80 | 65 |
| CCLI150 | 60 | 45 |
| CCLI200 | 120 | 110 |
| CCLI300 | 130 | 80 |
| CCLI400 | 100 | 60 |

| HD | Reference | ↕ mm | ↔ mm | → ← mm | ↔ mm | kg/stk | 📦 | Stock | Unit |
|----|----------------|---------|---------|------------|---------|--------|---|-------|------|
| - | CCLI100 | 213 | 100 | | | 0,488 | 6 | X | STK |
| - | CCLI150 | 215 | 150 | | | 0,594 | 6 | X | STK |
| - | CCLI200 | 218 | 200 | | | 0,881 | 6 | X | STK |
| - | CCLI300 | 224 | 300 | | | 1,402 | 6 | X | STK |
| - | CCLI400 | 229 | 400 | | | 1,784 | 6 | X | STK |

To order per full packaging.
Multiple brackets can be mounted one below another.

