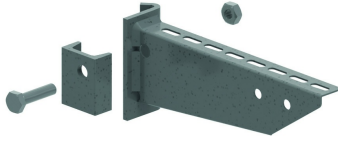


HDHKI

Welded clamping bracket



For fixing to ceiling profiles HDHSIZ and HDIPE80S

Standard finish	Hot-dip galvanised
Optional finish PE	Duplex system

	Max. load (in daN)
HDHKI100	300
HDHKI150	300
HDHKI200	300
HDHKI250	330
HDHKI300	330
HDHKI400	310
HDHKI500	310
HDHKI600	300

HD	Reference	↕ mm	↔ mm	→ ← mm	↔↔ mm	kg/stk	📦	Stock	Unit
-	HDHKI100	90	117			0,513	24	X	STK
-	HDHKI150	90	167			0,569	24	X	STK
-	HDHKI200	90	217			0,631	24	X	STK
-	HDHKI250	100	267			0,688	12	X	STK
-	HDHKI300	100	317			0,881	12	X	STK
-	HDHKI400	117	417			1,059	12	X	STK
-	HDHKI500	117	517			1,428	6	X	STK
-	HDHKI600	117	617			1,740	6	X	STK

Welded headplate.

Included: clamp plate, bolt HDB10.40 and nut HDM10.

Max. load (in daN): uniformly distributed over complete width of cantilever brackets.