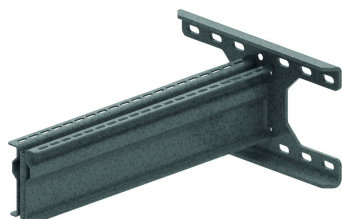


HDWKMD

Heavy welded double bracket



For fixing to I-beam and wall.
 When fitting to an I-beam, to be fixed with TIM12 and corresponding P1000 profile (300 mm max.).
 SWL is limited to 615 daN when fitting on the open side of the I-beam.
 Maximum I-beam width = 300 mm.

Standard finish	Hot-dip galvanised
Optional finish PE	Duplex system

	Max. load (in daN)
HDWKMD500	1500
HDWKMD600	1300
HDWKMD800	950
HDWKMD1000	750

HD	Reference	↕ mm	↔ mm	→ ← mm	↔ mm	kg/stk	📦	Stock	Unit
-	HDWKMD500	170	525			5,983	1	X	STK
-	HDWKMD600	170	625			6,608	1	X	STK
-	HDWKMD800	170	825			7,858	1	X	STK
-	HDWKMD1000	170	1025			9,108	1	X	STK

Max. load (in daN): uniformly distributed over complete width of cantilever brackets.