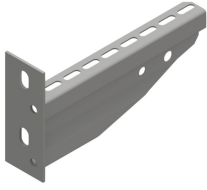


HDWKML

Welded bracket



For fixing on the wall and also on the ceiling profile.

| | |
|--------------------|--------------------|
| Standard finish | Hot-dip galvanised |
| Optional finish PE | Duplex system |

| | Max. load (in daN) |
|-----------|--------------------|
| HDWKML100 | 295 |
| HDWKML200 | 338 |
| HDWKML300 | 325 |
| HDWKML400 | 400 |
| HDWKML500 | 355 |
| HDWKML600 | 310 |

| HD | Reference | ↑ mm | ↔ mm | → ← mm | ↔ mm | kg/stk | 📦 | Stock | Unit |
|----|------------------|---------|---------|------------|---------|--------|----|-------|------|
| - | HDWKML100 | 40 | 117 | | | 0,284 | 12 | X | STK |
| - | HDWKML200 | 40 | 217 | | | 0,444 | 12 | X | STK |
| - | HDWKML300 | 40 | 317 | | | 0,717 | 12 | X | STK |
| - | HDWKML400 | 40 | 417 | | | 0,947 | 6 | X | STK |
| - | HDWKML500 | 40 | 517 | | | 1,125 | 6 | X | STK |
| - | HDWKML600 | 40 | 617 | | | 1,322 | 6 | X | STK |

To order per full packaging.

Max. load (in daN): uniformly distributed over complete width of cantilever brackets.