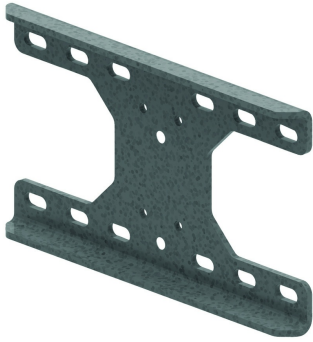


UKPIM

Universal wall mount bracket



Adapter plate for fitting wall supports on an I-beam or 'soft' wall. Goes with HDWKM and WSUN.

Standard finish		Hot-dip galvanised							
Optional finish PE		Duplex system							
HD	Reference	↑ mm	↔ mm	→ ← mm	↔ mm	kg/stk	📦	Stock	Unit
-	HDKPIM	203	350			3,916	4		STK

Including 2x zinc-plated bolt M10, 2x washer and 2x nut.
 When fitting to an I-beam, to be fixed with TIM12 and corresponding P1000T profile.
 Maximum I-beam width = 300 mm.

