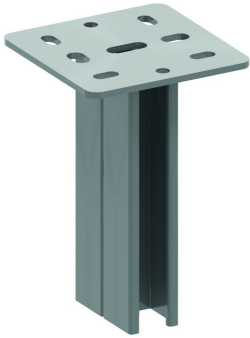


HSMD

Double ceiling profile



Ceiling profile: MP41.41 double
Welded headplate: 135x135 mm

Max. load: 3500 daN
Thickness head plate: 5 mm

Standard finish Electro zinc-plated

Optional finish Hot-dip galvanised

Optional finish PE Coating

HD	Reference	↑ mm	↔ mm	→ ← mm	↔ mm	kg/stk	📦	Stock	Unit
HD	HSMD200	200				1,600	15	X	STK
HD	HSMD300	300				2,150	1	X	STK
HD	HSMD400	400				2,650	1	X	STK
HD	HSMD500	500				3,300	1	X	STK
HD	HSMD600	600				3,900	1	X	STK

For single and double sided fixing of brackets.
Use sliding nut PNP10 and hexagonal bolt B10.30.
Protection cap in yellow PVC: DOP41.82

