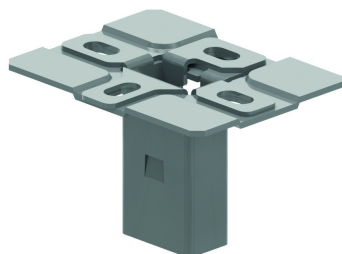


KPCL

Clippable headplate



Clippable headplate for ceiling profile

Max. load: 300 daN

Standard finish

Pre-galvanised

HD	Reference	↕ mm	↔ mm	→ ← mm	↔ mm	kg/stk	📦	Stock	Unit
-	KPCL41.21	84	130			0,530	10	X	STK

To order per full packaging.

Innovative and low cost.

Tested according to CEI/IEC 61537.

The end plate should always be fixed with the supplied supporting plate.