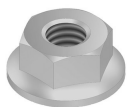


RM

Flange nut (DIN 6923)



Standard finish	Electro zinc-plated
Optional finish	Hot-dip galvanised

Reference	D	M	S	Dc
RM6	6	6	10	14.2
RM8	8	8	13	17.9
RM10	10	10	15	21.8
RM12	12	12	18	26

HD	Reference	↕ mm	↔ mm	→ ← mm	↔ mm	kg/stk		Stock	Unit
HD	RM6			M6		0,003	100		STK
HD	RM8			M8		0,007	100		STK
HD	RM10			M10		0,013	100		STK
HD	RM12			M12		0,021	100		STK

To order per full packaging.

