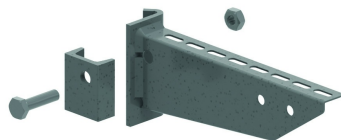


HDHKI

Welded clamping bracket

For fixing to ceiling profiles HDHSIZ and HDIPE80S



	Max. load (in daN)
HDHKI100	300
HDHKI150	300
HDHKI200	300
HDHKI250	330
HDHKI300	330
HDHKI400	310
HDHKI500	310
HDHKI600	300

Reference	↑ mm	↔ mm	→ ← mm	↔ mm	kg/stk	📦	Unit
HDHKI100	90	117			0,513	24	STK
HDHKI150	90	167			0,569	24	STK
HDHKI200	90	217			0,631	24	STK
HDHKI250	100	267			0,688	12	STK
HDHKI300	100	317			0,881	12	STK
HDHKI400	117	417			1,059	12	STK
HDHKI500	117	517			1,428	6	STK
HDHKI600	117	617			1,740	6	STK

Welded headplate.

Included: clamp plate, bolt HDB10.40 and nut HDM10.

Max. load (in daN): uniformly distributed over complete width of cantilever brackets.