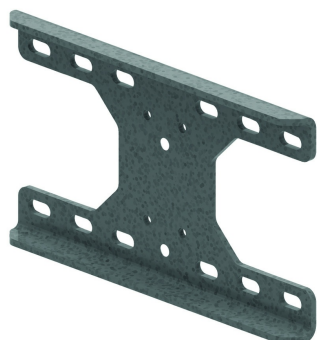


UKPIM

Universal wall mount bracket



Adapter plate for fitting wall supports on an I-beam or 'soft' wall. Goes with HDWKM and WSUN.

Reference	↑ mm	↔ mm	→ ← mm	↔ mm	kg/stk	📦	Unit
HDUKPIM	203	350			3,916	4	STK

Including 2x zinc-plated bolt M10, 2x washer and 2x nut.
When fitting to an I-beam, to be fixed with TIM12 and corresponding P1000T profile.
Maximum I-beam width = 300 mm.

