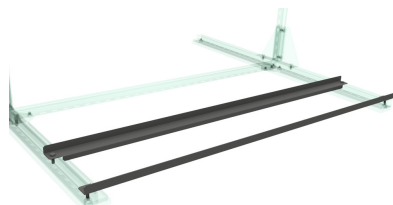


# ZMCWSFP2S

## Counterweight support



Reference	↑ mm	↔ mm	→  ← mm	↔ mm	kg/stk	📦	Unit
<b>ZMCWSFP2S.800</b>	48	93	2	782	1,119	2	STK
<b>ZMCWSFP2S.1500</b>					2,287	2	STK

### CHARACTERISTICS

The FP2S accessories are sold separately, so you can create the installation 100% to your requirements.

Article	Maximum distributed load per pair (kg)
ZMCWSFP2S.800	130
ZMCWSFP2S.1500	100

Veiligheidsfactor = 1.7

### TECHNICAL INFORMATION

Zinc magnesium

No optional finish possible

