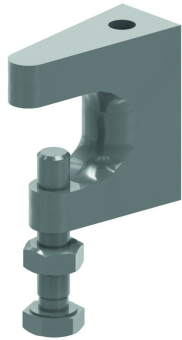


FL Fixing clamp for threaded rod



Article	Max. load (in daN)	Clamping range
FL1	250	0-22 mm
FL2	250	0-19 mm
FL3	350	5-25 mm

Reference	↕ mm	↔ mm	→ ← mm	↔ mm	kg/stk	📦	Unit
FL1			M8		0,140	-	STK
FL2			M10		0,150	-	STK
FL3			M12		0,210	-	STK

The fixing clamp is useful for I-profiles which are placed horizontally and for I-profiles with a certain angle of inclination. The fixing clamp is delivered with an adjustable screw and lock-nut. Threaded rod should be ordered separately.